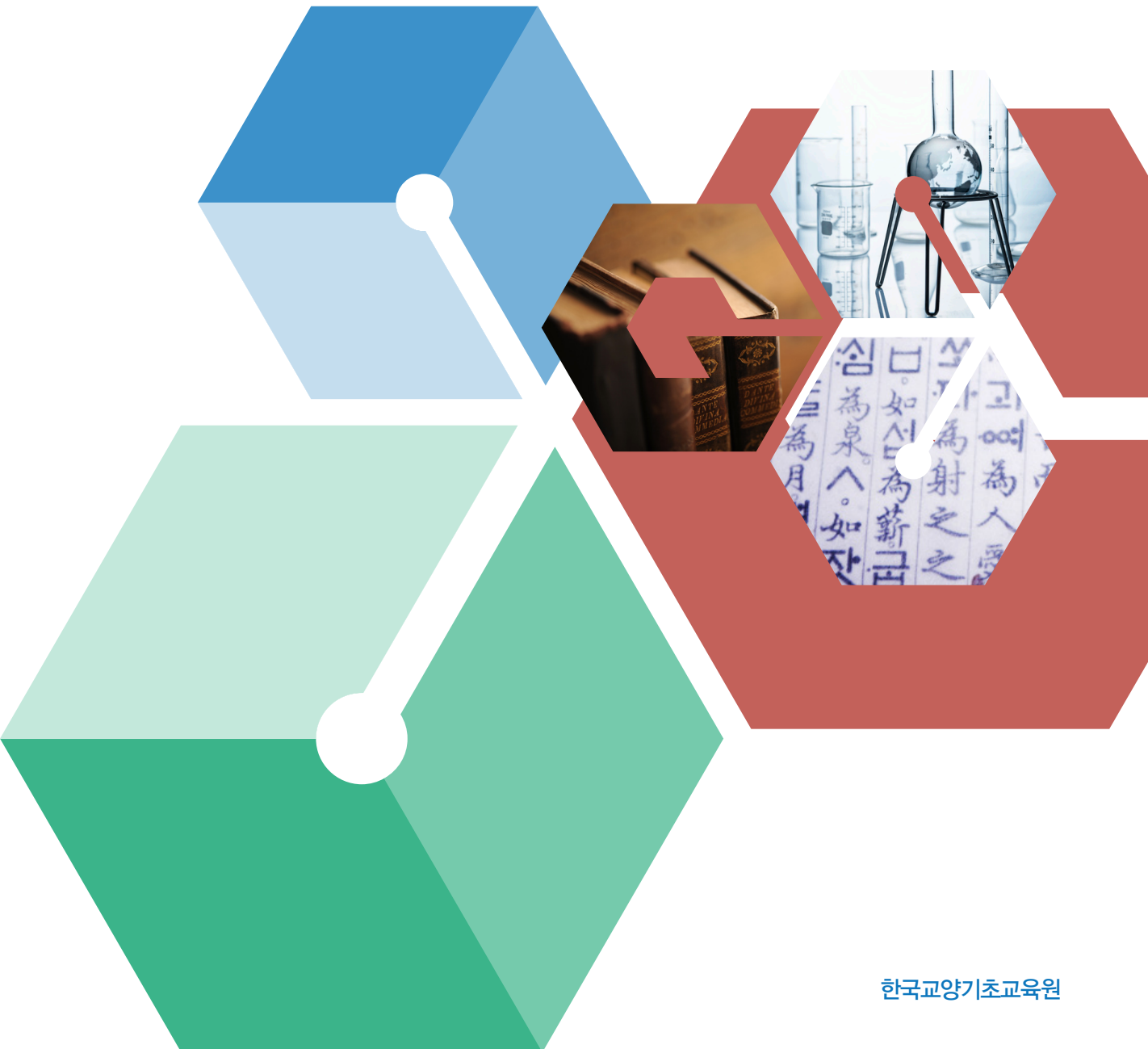


KONIGE



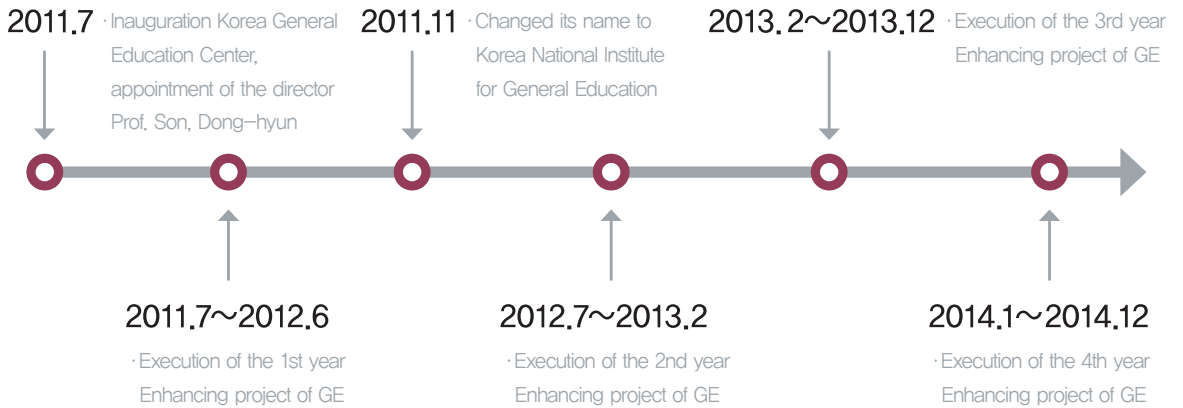
Korea National Institute for General Education



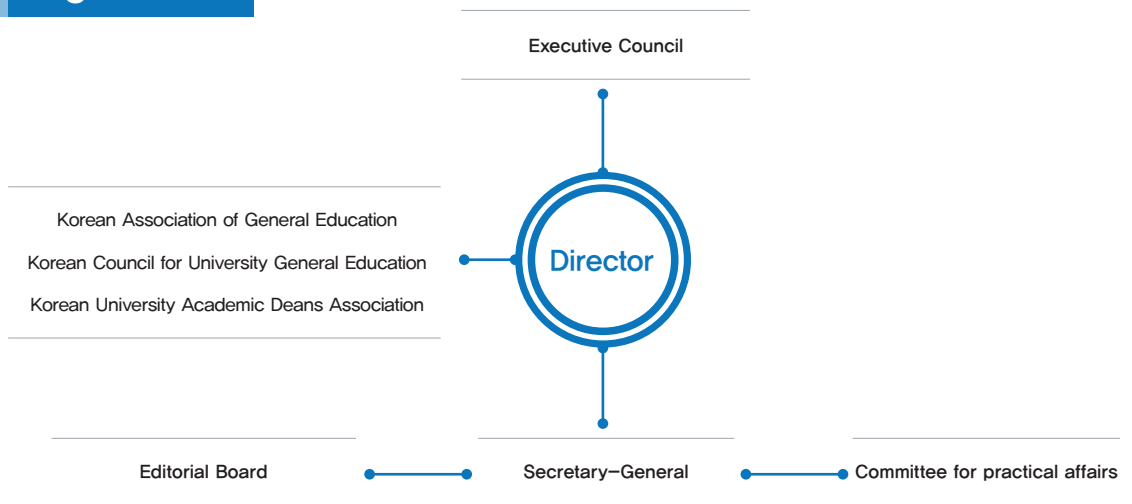
About KONIGE

KONIGE was established as an affiliated organization of KCUE(Korean Council for University Education) in 2011 with the purpose of reforming the whole undergraduate education by enhancing liberal arts education which has been neglected in Korea.

History



Organization



Vision & Mission

Vision

- ✦ KONIGE, as a cross-universities institute, presents a vision of sweeping reforms of higher education at Korean universities with the purpose of breeding up creative and talented students required in the new age of global information society.

Mission

KONIGE undertakes the task of

- ✦ correcting the wrong conventional concept of general education at the universities and
- ✦ supporting the efforts to improve the curriculum, to develop courses or programs for desirable GE, to spread and share the ideas and know-hows needed for enhancing the GE.

Goals

1st step (2011–2012)

- ✦ Developing curriculum or courses and spreading them to enhance the intellectual competence of GE
- ✦ Establishing a network among universities to promote their cooperation
- ✦ Accumulating the contents of GE for common sharing
- ✦ Developing the evaluation system of GE

2nd step (2013~)

- ✦ Supporting development of various educational programs upon the unique needs of each university
- ✦ Supporting the universities to share the accumulated contents for GE.
- ✦ Developing the GE curriculum which contains the major study in the field of basic disciplines
- ✦ Consulting the universities which want to accept the evaluative comments on their GE.
- ✦ Evaluating the input, process and output of GE at each university which wants it.



Main Activities

❖ Curriculum or courses(subject) development

- Consolidation of the ground of GE, its quality improvement and direction setting
On the basis of basic elements such as educational purpose, educational system, educational contents, lectures and professors, teaching and learning methods, administrative system and financial support etc
- Development of **cross-universities** educational program (curriculum, courses/subjects) in the field of GE.
To create the environment which can realize 'knowledge basis society', 'convergent education', and 'creative economy' through GE.
- Performance of research projects for the purpose of enhancing the GE.

❖ Correction of the wrong conventional concept of GE

Aiming at the cross-social spreading of correct concept regarding the importance and necessity of GE, various forums and journal publishing are planned:



• General Education Cooperation Forum :

To promote the convivial relationship between instructor group and important personnels outside of the university, 2-3 forums are planned per year.



• Core General Education Curriculum Development Forum :

To mutually share and spread new courses/subjects and curriculum development on cross-universities level, 2 forums are planned per year.



• Joint Academic Conference :

An academic conference is to be jointly held together with its sister organizations, Korean Council for University General Education and Korean Association for General Education. It is held twice in a year in June and November.



- Publication of e-journal Du-Ru-Nae : 'Durunae' means word for word 'streaming everywhere', but in context 'intelligence coping with every serious problems to find any solution. Thereby is implied that the GE helps the intelligence ripen. It is published in every other month for the expansion of knowledge and know-how on GE.

- Construction of GE archive

DB containing materials, research reports and excellent videos is under construction to prepare the groundwork for the hub role of GE related know-how and information.

❖ Competence Enhancement of Teachers and Education Improvement

Before starting every semester, group consulting for GE teachers will be carried out. In addition individual university consultation will be performed, too.



- Group consulting related with GE :

A group consulting for GE professors in each university is held before every semester to reduce the gap GE level among universities and to create an innovative GE atmosphere at universities by emphasizing the significance of positive conception of GE.

- University general education consulting :

GE experts visit each university to provide systematic and detailed status evaluation and solution to various problems related to GE at each university.

Main Activities

❖ Humanistic Education Enhancement

Specialists from each field jointly seek the direction and method of humanistic education, support humanistic education program development required by global society and carry out the program of reading classics which enables the development of basic knowledge, creative thinking, communication skill, public mind and emphatic ability.



• Courses/subjects development in Humanistic education field:

It is designed to develop the curriculum to enhance humanistic education which can be practically implemented, supporting other humanistic major courses.



• Humanistic Education Symposium :

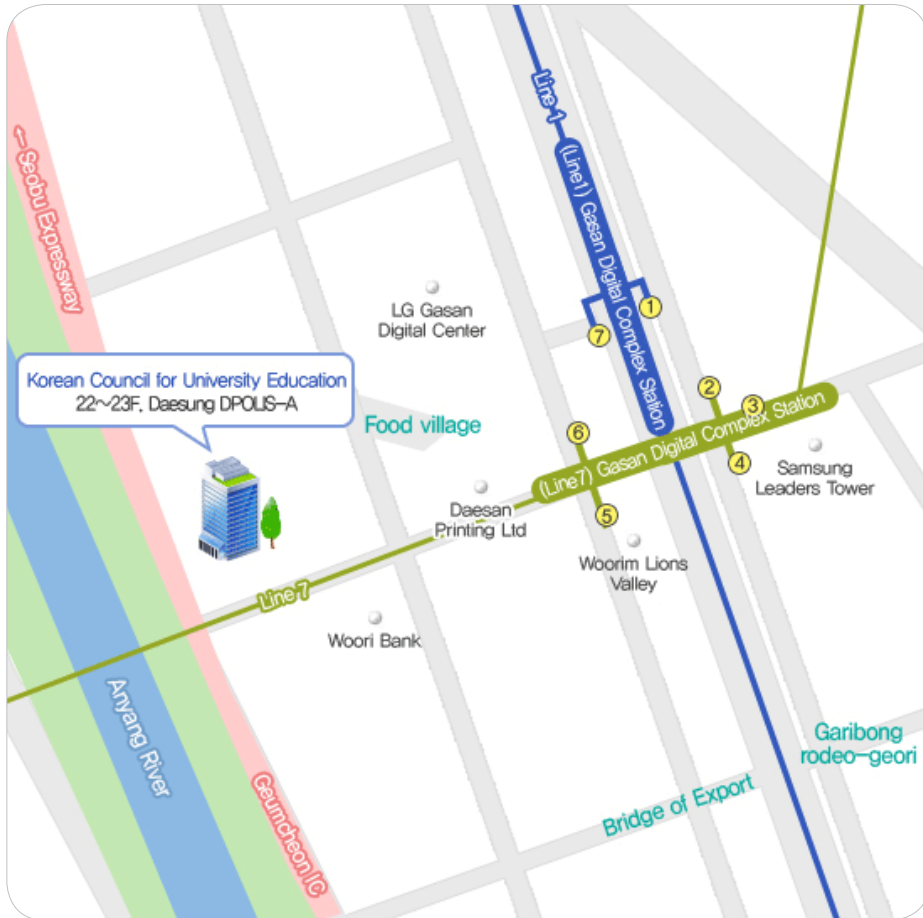
To seek for a detailed and practically implementable method based on the research result is the purpose. It is planned also for cross-universities and cross-social expansion of it in the field of humanistic education by holding academic symposium where specialists from various fields can participate.



• Programs for Reading Classics :

It is designed to encourage students to enjoy reading classics in order to improve their critical and creative thinking ability. Besides, the settlement of canon classics is also intended.

Office Location & Directions



By public transportation

Gasan Digital Complex Station line 1, line 7 :

- Leave Gasan Digital Complex Station through exit 6 At the top of the stairs, turn left, cross the street and walk 10 minutes



Affiliated with Korean Council for University Education

(153-803) 23F, Daesung DPOLIS-A 606 Seobusaet-gil Geumcheon-gu Seoul Korea

TEL: 82-2-6919-3951~4

FAX: 82-2-6919-3959

E-mail: konige@kcue.or.kr

<http://www.konige.kr>